



TWIN CROWN

OIL FIELD EQUIPMENT L.L.C

توين كراون لمعدات حقول النفط ش.ذ.م.م



Distributor & Stockist of

**Total Control Systems (TCS) Fuel Flow Meters, Petrotec & China Fuel Dispensers
Fill-Rite flow Meters & Pumps, MP Fuel Transfer Pumps, M.Carder Nozzles &
Swivel Fitting, Fuel Filters, Petroleum Hoses, Reel Craft Hose Reels,
Gasso Loading Arms & Tanker Equipments Etc...**



Tel.: +971 4 258 4211, Mob.: +971 52 888 8584 / +971 50 457 9978
P.O. Box : 48500, Dubai - United Arab Emirates
E-mail : sales@twincrown.com



www.twincrown.com



About us :

Trusted Provider of Oilfield Supply and Services

Twin Crown Oilfield Equipment LLC, is a leading company with its global headquarters at Dubai engaged in supplying a range of oilfield equipment and allied products of world-renowned brands. We deal in a wide variety of products like Gasoline Pumps, Dispensers, Petroleum Hose Pipes, TCS (Total Control Systems) Flow Meters, Filters, Nozzles, Fill-Rite Pumps, Water flow Meters, Tanker Equipments, etc. All under one roof. Established in 2002, Twin Crown Oilfield Equipment LLC has achieved a phenomenal growth having promptly matured and diversified to a great extent, enabling itself to service the needs of its customers to their maximum satisfaction.

Our Vision

Our vision is to provide superior quality products and exceptional client service at competitive prices. We ensure that our clients receive premium quality products and services time and time again, regardless of the application or installation. Making your experience with us a positive is our priority. In working to achieve our vision we provide the satisfied services.

Our Mission

- Deliver high quality products and superior customer service.
- Institute policies and procedures that meet the highest ethical safety and business standards.
- Establish leadership standards in the industry with which we are associated
- Recognize that our greatest assets are not material, but rather those individuals with whom we work with the customers whom we serve.
- Be sensitive to the social and economic concerns of our community.



Edward A Martis

Managing Director

Mob. : +971 52 888 8584
+971 50 695 7808

James D'souza

Sales Executive

Mob. : +971 50 457 9978
: +971 50 763 4418

Sunil Rodrigues

Operations Manager

Mob. : +971 56 790 6661



	Gallery - Projects	01 - 02
	Total Control Systems Fuel Flow Meters - USA	03 - 04
	Petrotec - Portugal & Fuel Dispensers - China	05 - 06
	MP Petroleum Pumps - USA	07 - 08
	Fill-Rite Fuel Flow Meters & Fuel Transfer Pumps - USA	09 - 10
	Gorman - Rupp Self-Priming Centrifugal Pumps - USA	11
	Stephenson Twin Screw Pumps - INDIA	12
	Rotofluid Rotary Gear Pumps - INDIA	
	Blackmer Fuel Transfer Vane Pumps - USA	13
	Corken Fuel Transfer Vane Pumps - USA	
	DAGSO Diesel Engine Pump - ITALY	14
	Red Jacket Submersible Pumping Systems - USA	15
	FE-Petro Submersible Pumping Systems - USA	
	Reelcraft Fuel Hose Reels - USA	16
	Gasso Top & Bottom Loading Arm - SPAIN	17 - 18
	Gassoflex Petroleum Composite Hose - SPAIN	
	Novaflex Petroleum Rubber Hose - CANADA	
	Fuel Nozzles - USA	19
	Fuel Filters - USA	20
	Camlock Couplings - USA	
	Equiptank Tanker Equipments - SPAIN	21
	Betts Tanker Equipments - USA	22
	Emco Wheaton Tanker Equipments - UK	
	B-Meters Woltmann Type Water Meters - ITALY	23
	Explosion Proof Electric Motors - BRAZIL	24

GALLERY - PROJECTS



GALLERY - PROJECTS



Mechanical Fuel Flow Meters - USA

Positive Displacement Flow Meters



The 700 series rotary flow meter has a simple and efficient meter design consisting of a housing and three rotors that rotate in unison within the measuring chamber. The absence of wear, from no metal-to-metal contact inside the chamber, eliminates any deterioration in accuracy and provides a long service life. The rotors are supported by bearings inserted into two bearing plates, where at the end of each rotor shaft is a timing gear. The timed rotation between each rotor is then transferred through the calibration adjuster to the register, which will then give a consistent and superior measurement of accuracy. Available Size - 1.5" to 6" with a low range of 60 GPM to 1000 GPM.

Meter Operating Specifications

Meter	Type(s) Available	Flange Connection(s)*	Max. Capacity	Working Pressure**	Working Temperature***
700-15	SP, SPA, IP & IC	1 1/2" NPT Flange; 1" & 2" Options	60 GPM (227 LPM)	150 PSI (10.5 BAR)	-40°F to 160°F (-40°C to 71°C)
700-20	SP, SPA, SPD, IP, IC, AF, SS, SSD & LP	2" NPT Flange; 1 1/2" Option	100 GPM (380 LPM)	150 PSI (10.5 BAR)	-40°F to 160°F (-40°C to 71°C)
700-25	SPA & SPD	2" NPT Flange	150 GPM (567 LPM)	150 PSI (10.5 BAR)	-40°F to 160°F (-40°C to 71°C)
700-30	SP, SPA, SPD, IP, IC & AF	3" NPT Flange, 2" Option	200 GPM (760 LPM)	150 PSI (10.5 BAR)	-40°F to 160°F (-40°C to 71°C)
700-35	SPA & SPD	3" NPT Flange	300 GPM (1,135 LPM)	150 PSI (10.5 BAR)	-40°F to 160°F (-40°C to 71°C)
700-40	SP, SPA, SPD, IP, IC & AF	4" NPT Flange; 3" Option	500 GPM (1,893 LPM)	150 PSI (10.5 BAR)	-40°F to 160°F (-40°C to 71°C)
700-45	SPA & SPD	4" NPT Flange	600 GPM (2,271 LPM)	150 PSI (10.5 BAR)	-40°F to 160°F (-40°C to 71°C)
700-60	SPA	6" ANSI Flange	800 GPM (3,040 LPM)	150 PSI (10.5 BAR)	-40°F to 160°F (-40°C to 71°C)
700-65	SPA	6" ANSI Flange	1000 GPM (3,800 LPM)	150 PSI (10.5 BAR)	-40°F to 160°F (-40°C to 71°C)



The TCS 700 series rotary flow meter has a simple and efficient meter design consisting of a housing and three rotors that rotate in unison within the measuring chamber. The absence of wear, from no metal-to-metal contact within the chamber, eliminates any deterioration in accuracy and provides a long service life. The rotors are supported by bearings inserted into two bearing plates, where at the end of each rotor shaft is a timing gear. The timed rotation between each rotor is then transferred through the calibration adjuster to the register, giving a consistent and superior measurement of accuracy.

Performance Features

The TCS 700 rotary Flow meter combines excellent accuracy with low pressure drop. The TCS 700 rotary Flowmeter has a compact size and lightweight design that offers minimal maintenance and long service life. This meter is built with advanced materials of construction for a broad range of measurement applications and is accompanied by a full selection of accessories and electronic registration.

Meter Types

SP	Standard Petroleum	For metering refined petroleum products such as Gasoline, Fuel Oils, Diesel, Bio-Diesel, Kerosene, Vegetable Oils, Motor Oils, Naptha, Ethylene Glycol, etc.
SPA	Standard Petroleum (Aviation)	For metering refined petroleum products such as Aviation Gasoline, Jet Fuels, Ethanol, Gasoline, Fuel Oils, Diesel, Bio-Diesel, Kerosene, Vegetable Oils, Motor Oils, Naptha, Ethylene Glycol, etc.
SPD	Standard Petroleum (Ductile Iron)	For metering refined petroleum products such as Ethanol, Methanol, Gasoline, Fuel Oils, Diesel, Bio-Diesel, Kerosene, Aviation Gasoline, Vegetable Oils, Motor Oils, Naptha, Ethylene Glycol, etc.
AF	All-Ferrous	For metering Pesticides, Fertilizers, Food Processing Liquids, Industrial Chemicals, Solvents, Paints, Inks, Alcohols and many other liquids; such as Liquid Sugars, Liquid Feeds, MEK, Ethanol, Corn Syrup, Soy Bean Oil, Shortenings, Latex Products, Adhesives, Naptha, etc.
IP	Industrial Products	For Food Processing, Chemicals, General Solvents and many other liquids such as Corn Syrup, Soy Bean Oil, Liquid Sugars, Shortenings, Latex Products, Adhesives, etc.
IC	Industrial Chemicals	For metering Alcohols, Chemicals, Solvents, Water and many other Non-Lubricating Liquids such as Acetones, Ethanol, Naptha, Xylene, MEK, Toluene, Resins, etc.
SS	Stainless Steel	For metering the same products as the SP, SPA, SPD, IP, IC and AF meter types, but includes special handling liquids; such as Acids, Anti-Icing Fluids, Vinegar, Fruit Juices, Corn Syrup, Micro-Nutrients, etc.
SSD	Stainless Steel (DEF)	For metering Diesel Exhaust Fluid (DEF), AdBlue, ARLA and AUS32
LP	Liquefied Petroleum	For metering Liquefied Petroleum Gas (LPG), NH3



Fuel Dispensers - CHINA

Electronic / Digital Dispensing Pumps



TCCS series of dispensers are available in a range of configurations starting from 1 product 1 nozzle, 1 fueling position upto 4 products 8 nozzles, 4 fueling (simultaneous). They are available in suction and submersible types as also in standard and heavy duty.

Single nozzle (Mono) and two nozzle (Duo) models of the TCCS series are available in short and tall versions. The nozzles can either be lane or island oriented. Mono model is also available in a wide chasis. Suitable for all petroleum products. Available in 3/4" and 1" with a Max Capacity of 40 to 80 LPM.

Technical Specifications for SureFill Suction Electronic Units

MODEL G, 112, PUMP-NOZZLE-DISPLAY, TOKEIM TYPE - 1 NOZZLE PUMP	MODEL G, 224, PUMP-NOZZLE-DISPLAY, TOKEIM TYPE - 2 NOZZLE PUMP	MODEL G, 244, PUMP-NOZZLE-DISPLAY, TOKEIM TYPE - 4 NOZZLE PUMP
1 X PRODUCT (SUCTION TYPE)	2 X PRODUCT (SUCTION TYPE)	2 X PRODUCT (SUCTION TYPE)
1 X MOTOR 220V, 50HZ, 0.75KW	2 X MOTOR 220V, 50HZ, 0.75KW	2 X MOTOR 220V, 50HZ, 0.75KW
1 X TOKHEIM TYPE GEAR PUMP	2 X TOKHEIM TYPE GEAR PUMP	2 X TOKHEIM TYPE GEAR PUMP
1 X TOKHEIM TYPE FLOWMETER	2 X TOKHEIM TYPE FLOWMETER	4 X TOKHEIM TYPE FLOWMETER
1 X OPW TYPE FUEL NOZZLE, 3/4 INCH NOZZLE, 45LPM	2 X OPW TYPE FUEL NOZZLE, 3/4 INCH NOZZLE, 45LPM	4 X OPW TYPE FUEL NOZZLE, 1 INCH NOZZLE, 80LPM
1 X CONTINENTAL FUEL HOSE, LENGTH: 5M WITH COUPLINGS	2 X CONTINENTAL FUEL HOSE, LENGTH: 5M WITH COUPLINGS	4 X CONTINENTAL FUEL HOSE 1"INCH , LENGTH: 5M WITH COUPLINGS
1 X SOLENOID VALVE	2 X SOLENOID VALVE	4 X SOLENOID VALVE
1 X BREAKAWAY VALVE	2 X BREAKAWAY VALVE	4 X BREAKAWAY VALVE
1 X HOSE SWIVELS	2 X HOSE SWIVELS	4 X HOSE SWIVELS
1 X TOTALIZER	2 X TOTALIZER	4 X TOTALIZER
1 X ELECTRONIC CONTROLLER AIL-S2 TYPE	1 X ELECTRONIC CONTROLLER AIL-S2 TYPE	1 X ELECTRONIC CONTROLLER AIL-S2 TYPE
1 X PRESET KEYBOARD, METAL MATERIAL	2 X PRESET KEYBOARD, METAL MATERIAL	4 X PRESET KEYBOARD, METAL MATERIAL
2 X DISPLAY 886, WHITE	4 X DISPLAY 886, WHITE	4 X DISPLAY 886, WHITE
1 X VOLTAGE STABILIZER	1 X VOLTAGE STABILIZER	1 X VOLTAGE STABILIZER
SS SIDE COLUME	SS SIDE COLUME	SS SIDE COLUME
POWER SUPPLY: 220V 50/60HZ	POWER SUPPLY: 220V 50/60HZ	POWER SUPPLY: 220V 50/60HZ
EMERGENCY STOP SWITCH	EMERGENCY STOP SWITCH	EMERGENCY STOP SWITCH
PRINTER - OPTIONAL		



Fuel Dispensers - Portugal



Progress range of dispensing pumps has an attractive design that brings life to the forecourt. Specifically the P5000-II LH fuel dispensing pump represents the best in its class, providing flexibility, reliability, cost effectiveness and easy life to your customers.

The hose retraction system provides years of trouble free operation and most of the times the free available hose length is more than enough, relieving your customers from a useless and tiring effort.

When required though, it can be provided up to 4,1m of usable hose length. Easy maintenance and upgrade capability are key to your business.

Easy access is provided to all parts of the equipment and most options can be installed at a later date, such as: multimedia/payment terminals, vapour recovery and monitoring, ATC, to name just a few. Your equipment can grow and follow your business requirements.



Mechanical Fuel Flow Meters - CHINA Positive Displacement Flow Meters



The **M Series** rotary flow meter has a simple and efficient meter design consisting of a housing and three rotors that rotate in unison within the measuring chamber. The absence of wear, from no metal-to-metal contact inside the chamber, eliminates any deterioration in accuracy and provides a long service life. The rotors are supported by bearings inserted into two bearing plates, where at the end of each rotor shaft is a timing gear. The timed rotation between each rotor is then transferred through the calibration adjuster to the register, which will then give a consistent and superior measurement of accuracy. Available Size - 1.5" to 6" with a low range of 60 GPM to 1000 GPM.

SPECIFICATION	M-50 Series	M-80 Series	M-100 Series
MODEL	M-50 Series	M-80 Series	M-100 Series
Size	50mm / 2"	80mm/3"	100mm/4"
Flow Range	38-550 L/min	75-1150 L/min	130-2300 L/min
Max Pressure	150 PSI (10.5 BAR)		
Accuracy	±0.2%		
Repeatability	≤0.05%		
Standard Measurement	Liter / US Gallon / IMP Gallon		
Package	Carton Box;	Carton Box;	Wooden Case
Dimension*	C:51X46X48cm; W53X48X51cm	60x52x60cm	75x63x73cm
Gross Weight*	C:28 kgs; W:38kgs	55kgs	97kgs



Self Priming Centrifugal Petroleum Pumps - USA



MP Pumps PG, PO & PE Series Self Priming Pumps Are Specifically Designed For The Transfer of Petroleum Based Fluids. MP Pump's Petroleum pumps capitalize on the need for pumps to handle all those fossil and bio-fuels that keep the Economies of the world growing. MP Pump's Petroleum Series is targeted at the bulk transfer market and designed for use in agricultural, fuel transport, aviation and many other fuel transfer applications. Other pump manufacturers design their pumps to be capable of handling all petroleum base fluids. This "one-pump-fits-all" approach creates unnecessary costs for most customers. MP Pumps grouped various petroleum fluids according to their characteristics and designed three distinct pump series to address those characteristics.

Model PG Pumps Compatible For Gasoline, Kerosene, Avgas & Jet Fuel

Model PO Pumps Compatible For BioDiesel, Fuel Oil & Diesel

Model PE Pumps Compatible For Ethanol & E 85

The "PG" model is available in Pedestal mount for flexible coupling or Close Coupled mount to C Face Class I Group D Explosion Proof electric motors. Ductile Iron is the standard construction for the volute and adapter. The open impeller is standard in cast iron construction with aluminum as an optional material. Standard material for the wear plate is aluminum. The standard self-lubricated Type 2 mechanical seal is equipped with a carbon rotating face, viton elastomer and stainless steel. Available Size - 2" to 4" with a low range of 20 GPM to 600 GPM

MODEL	SIZE	MOUNTING	STANDARD MATERIALS OF CONSTRUCTION					OPTIONAL MATERIALS		
			VOLUTE	IMPELLER	WEAR PLATE	ORING/ GASKET	SEAL	VOLUTE	IMPELLER	WEAR PLATE
PG 8	2" X 2"	Explosion Proof	Ductile Iron	Cast Iron	Aluminum	Viton Cork/Nitrile	Type 2 Viton/Carbon/Sil.Car./SS	C O N S U L T F A C T O R Y	Aluminum	C O N S U L T F A C T O R Y
PG 8	2" X 2"	Pedestal	Ductile Iron	Cast Iron	Aluminum	Viton Cork/Nitrile	Type 2 Viton/Carbon/Sil.Car./SS		Aluminum	
PG 10	2" X 2"	Explosion Proof	Ductile Iron	Cast Iron	Aluminum	Viton Cork/Nitrile	Type 2 Viton/Carbon/Sil.Car./SS		Aluminum	
PG 15	3" X 3"	Explosion Proof	Ductile Iron	Cast Iron	Aluminum	Viton Cork/Nitrile	Type 2 Viton/Carbon/Sil.Car./SS		Aluminum	
PG 15	3" X 3"	Pedestal	Ductile Iron	Cast Iron	Aluminum	Viton Cork/Nitrile	Type 2 Viton/Carbon/Sil.Car./SS		Aluminum	
PG 30	3" X 3"	Pedestal	Ductile Iron	Cast Iron	Aluminum	Viton Cork/Nitrile	Type 2 Viton/Carbon/Sil.Car./SS		Aluminum	
PG 40	4" X 4"	Pedestal	Ductile Iron	Cast Iron	Aluminum	Viton Cork/Nitrile	Type 2 Viton/Carbon/Sil.Car./SS		Aluminum	



End Suction Centrifugal Petroleum Pumps - USA



MP Pumps has adapted its Petroleum End Suction series pumps specifically for use with clean, non-abrasive petroleum products. Transfer and delivery of various fuels such as gasoline, ethanol, biodiesel, and fuel oils are just a few of the petroleum based products the end suction series is capable of handling. The Petroleum End Suction Series offers:

Model SG Pumps Compatible For Gasoline, Kerosene, Avgas & Jet Fuel

Model SO Pumps Compatible For BioDiesel, Fuel Oil & Diesel

Model SE Pumps Compatible For Ethanol & E 85

The "SG" models are available in Pedestal mount for flexible coupling or Close Coupled mount to C-Face Class 1 Group D Explosion Proof motors. Ductile Iron is the standard construction for the housing and adapter. Aluminum enclosed impellers are standard in the SG Series. The standard self-lubricating Type 2 mechanical seal is equipped with a carbon rotating face, viton elastomer and SS spring. The stationary seal face is silicon carbide. Available Size - 1" to 4" with a low range of 10 GPM to 700 GPM.

MODEL	SIZE	PORT	MOUNTING	STANDARD MATERIALS OF CONSTRUCTION			
				HOUSING	IMPELLER	GA SKET	SEAL
SG60	1-1/4" x 1"	NPT	Explosion Proof	Ductile Iron	Aluminum	Fiber	Type 2 Vit/Carbon/Sil. Car./SS
SG80	1-1/2" x 1-1/4"	Flange	Explosion Proof	Ductile Iron	Aluminum	Fiber	Type 2 Vit/Carbon/Sil. Car./SS
SG80	1-1/2" x 1-1/4"	Flange	Pedestal	Ductile Iron	Aluminum	Fiber	Type 2 Vit/Carbon/Sil. Car./SS
SG120	2" x 1-1/2"	Flange	Explosion Proof	Ductile Iron	Aluminum	Fiber	Type 2 Vit/Carbon/Sil. Car./SS
SG120	2" x 1-1/2"	Flange	Pedestal	Ductile Iron	Aluminum	Fiber	Type 2 Vit/Carbon/Sil. Car./SS
SG180	3" x 1-1/2"	Flange	Explosion Proof	Ductile Iron	Aluminum	Fiber	Type 2 Vit/Carbon/Sil. Car./SS
SG180	3" x 1-1/2"	Flange	Pedestal	Ductile Iron	Aluminum	Fiber	Type 2 Vit/Carbon/Sil. Car./SS
SG300	3" x 2-1/2"	Flange	Explosion Proof	Ductile Iron	Aluminum	Fiber	Type 2 Vit/Carbon/Sil. Car./SS
SG300	3" x 2-1/2"	Flange	Pedestal	Ductile Iron	Aluminum	Fiber	Type 2 Vit/Carbon/Sil. Car./SS
SG700	4" x 3"	Flange	Explosion Proof	Ductile Iron	Aluminum	Fiber	Type 2 Vit/Carbon/Sil. Car./SS
SG700	4" x 3"	Flange	Pedestal	Ductile Iron	Aluminum	Fiber	Type 2 Vit/Carbon/Sil. Car./SS

Fill-Rite's line of mechanical & digital flow meters are designed to meet the stringent demands of customers who need to monitor fuel usage accurately and with dependability. Rugged construction, easy to read numbers and the flexibility of horizontal or vertical positioning are just three features of these superior meters. Plus, all can be field calibrated for the utmost accuracy, regardless of fluid.

807C - 3-Wheel Mechanical Meter,
Size 3/4" & 1" Available
Flow rate 5-20 GPM
Operates at 50 psi



901CL - 4-Wheel Mechanical Meter,
Size 1" & 1.5" Available
Flow rate 6-40 GPM
Operates at 50 psi



TT10AN
In-Line Digital Turbine Meter
2-35 GPM / 8-132 LPM
Aluminium housing
1"NPT



900CD - Digital Meter,
Size 1" & 1.5" Available
Flow rate 6-40 GPM
Operates at 50 psi



Nextec Intelligence - Fill-Rite AC and DC Pumps

- * **Continuous duty*** - Transfer fuel all day
- * **Improved suction lift** - Variable speed motor adjusts to load
- * **Auto power down** - After 20 minutes of inactivity
- * **Intelligent Tones** - Indicate where attention is needed
- * **12 to 24V DC / 230 V** - Accepts a range of DC Power
- * **Removable power card** - Convenient and safe
- * **Lighter** - Great for mobile tanks, even aluminum
- * **Magnetic switch** - Smooth and field replaceable
- * **Lower amp draw** - Save battery power and pump life
- * **High flow rates** - Fill larger tanks quickly.



115/230V AC Fuel Transfer pumps

Fill-Rite® leads the world in AC fuel transfer pumps, and related accessories such as meters, hoses, nozzles, filters and more. Fill-Rite produces industry leading AC fuel transfer pumps that deliver superior performance in the most demanding applications.

FR700V - 230V AC Pump
3/4" Hose, 3/4" Manual Nozzle
20 GPM / 75 LPM
1/3 HP Motor



FR701VGL - 230V AC Pump
807C Mechanical Meter
3/4" Hose, 3/4" Manual Nozzle
20 GPM / 75 LPM
1/3 HP Motor



FR711VLA - 230V High Flow Pump
901L Mechanical Meter
1" Hose, 1" Automatic Nozzle
18 GPM / 68 LPM
1/3 HP Motor



FR310V - 230V High Flow AC Pump
1" Hose, 1" Automatic Nozzle
35 GPM/113 LPM
3/4 HP Motor



FR311VLB - 230V High Flow AC Pump
901L Mechanical Meter
1" Hose, 1" Automatic Nozzle
30 GPM/113 LPM
3/4 HP Motor



FR319VB - 230V High Flow AC Pump
900D Digital Meter
1" Hose, 1" Automatic Nozzle
35 GPM/113 LPM
3/4 HP Motor



12/24V DC Fuel Transfer pumps

Our Versatile line of DC fuel transfer pumps are available with lows ranging from 13 GPM, to the industry best low of 25 GPM. UL listed motors assure safety and dependability, and we have models compatible with Diesel, gasoline, kerosene, E15 and bio-diesel.

FR4211HL



FR2411HL



FR1210H



Hand Pumps- Fuel Transfer

Tough. Reliable. Long-Lasting. Fill-Rite hand pumps deliver liquids quickly and easily. Whether your transferring gasoline, oil or diesel, select from a variety of Fill-Rite hand pumps. You'll appreciate the trouble free performance of these rugged hand pumps.



FR112



FR112CL

80 Series pumps are designed for non-stop workloads. The straight-in-suction design of these high-efficiency pumps guarantees quick, positive self-priming and allows them to operate at high suction levels than most other self-priming centrifugal pumps. Liquid enters directly into the impeller eye. A suction check valve presents in-line return low when the pump is shut off. And, because 80 Series pumps have few moving parts, maintenance is minimal. 80 Series pumps are available with self-lubricated mechanical shaft seals.

Specifications

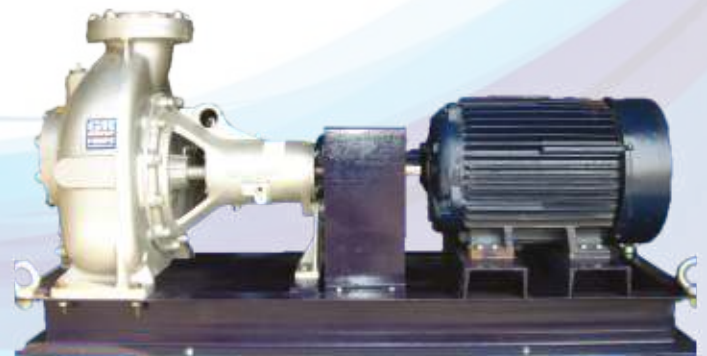
Size:	1-1/4"(31.25mm), 1-1/2"(37.5 mm), 2"(50mm), 3"(75mm), 4"(100mm), 6"(150mm), 8"(200 mm), 10"(250mm)
Max Capacity:	2,800GPM(177lps)
Max Head:	205'(62m)
Max Solids:	2.5"(64mm)
Max Temperature:	160F(71C)
Materials of Construction:	Cast Iron, Ductile Iron, Stainless Steel



O Series® pumps were originally designed for handling petroleum products. Later, O Series pumps were introduced into the industrial market for effective handling of solvents and similar liquids, as well as excellent clean water handling. The straight-in-suction design without a check valve eliminated entrance restrictions provides quick, reliable self-priming with few moving parts offering saving thru minimal maintenance and increased efficiency. The O Series has a variety of seal configurations to choose from allowing it to handle a number of different liquids.

Specifications

Size:	2" (50 mm), 3" (80 mm), 4" (100 mm), 6" (150 mm)
Max Capacity:	1,350GPM(85 lps)
Max Head:	400' (122 m)
Max Solids:	0-86/125" (17mm)
Max Temperature:	160 F(71C)
Materials of Construction:	Aluminium, Bronze, Cast Iron, Ductile Iron



Twin Screw Pump for liquids having no lubricating properties and also abrasive in nature For such liquid the gear box containing the timing gears are placed externally in a pool of oil, also the bearings are placed externally. This allows the pump to handle effectively any type of liquids like Crude Oil, Bitumen, Black Oil & Petroleum Refineries. Pressure: upto 15kg/cm². Available Size - 3/4" to 30" with a flowrange of 20 M3H to 1000 M3H.



Rotofluid Rotary Gear Pump - INDIA

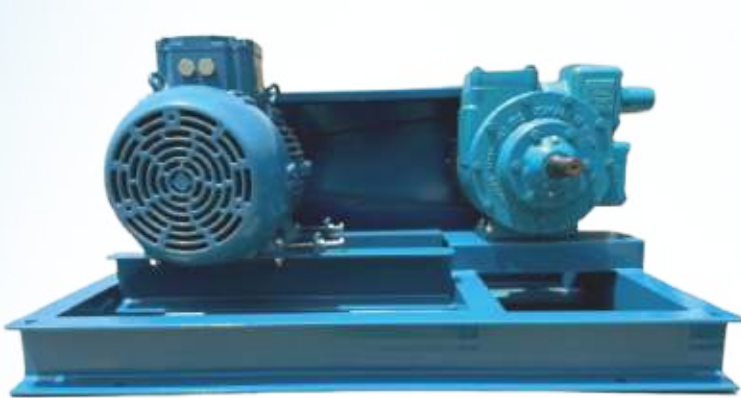
Fluid Tech Systems offer "ROTOFLUID" brand gear pump Model "FTRN/FTRB/FTRX" Which is heavy duty foot mounting type positive displacement rotary twin gear pump. Model "FTRN/FTRB/FTRX" having three piece construction it can be easily cleanable and having three piece construction it can be easily cleanable and having three piece construction it can be easily cleanable and hardened grind finished shaft, double helical gear prevent axial load & side thrust which is help to increase life and performance of pump. These pumps are having flange at the end of suction and pump. These pumps are having flange at the end of suction and delivery which are available in 1/2" to 6" size. These pumps can be operated up to pressure of 10 kg/cm² with 8.30 LPM to 2083.00 LPM flow capacity. These pumps are suitable for liquid up to viscosity of 1,00,000 SSU and maximum temperature up to 300°C.





Fuel Transfer Vane Pumps - USA

Blackmer® is the leading global provider of innovative, high-quality sliding-vane pump and reciprocating compressor technologies for the transfer of liquids and gases. Since 1903, the Blackmer brand has stood for unparalleled product performance, superior service and support, well-timed innovation and a commitment to total customer satisfaction. Our pumps and compressors are used in a multitude of applications in the process, energy, transport, and military and marine markets. Every pump, every compressor, is supported by a worldwide network of distributors and original equipment manufacturers. Available Size - 1.5" to 4" with a Flow range of 25 GPM to 500 GPM.



CORKEN Fuel Transfer Vane Pumps - USA

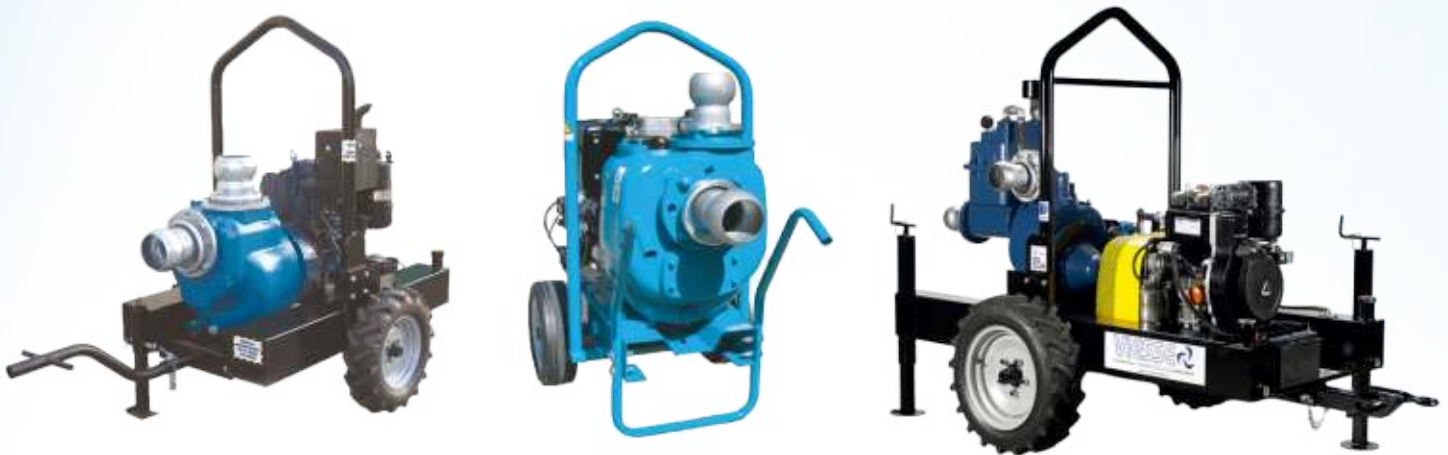
Corken CP-Series Coro-Vane® pumps produce a maximum differential pressure of 125 psig (8.6 bar g). Corken manufactures five sizes of Coro-Vane pumps, ranging from 20 gpm to 400 gpm (4.5–90.9 m³/hr). These pumps can handle discharge pressures up to 200 psig (13.8 bar g). They are designed for light liquids with viscosities below 10,000 SSU.



Diesel Engine Pump - ITALY

+ T VERSION Professional self-priming centrifugal pumps in cast iron, with diesel engine on simple 2 wheels trailer. Available electric or manual starter, flexible hoses for suction and delivery, rapid couplings and suction strainer.

+TT Version Professional self-priming centrifugal pumps in cast iron, with diesel engine on heavy duty 2 wheels trailer with incorporated fuel tank, for at least 12 hours of continuous working. Available in soundproof version LW(A) 100. Flexible hoses for suction and delivery rapid couplings and suction strainer on request. Available Size - 2" to 8" with a low range of 10 M3H to 550 M3H .



Dagso Fuel Transfer Self Priming Centrifugal Pumps

The pumps belonging to the ROBUSTA series are centrifugal with open impeller and high hydraulic efficiency with internal "armoured-shield" to resist to abrasive and corrosive action of liquids even if with solids in suspension. Any liquid with solids in suspension, large or small, harder soft, can be easily pumped by these machines. Fuel, Muddy water, bentonite sludge, bilge water, sawdust muds. Available Size - 2" to 16" with a low range of 10 M3H to 1500 M3H .



RED JACKET Submersible Pumping Systems - USA

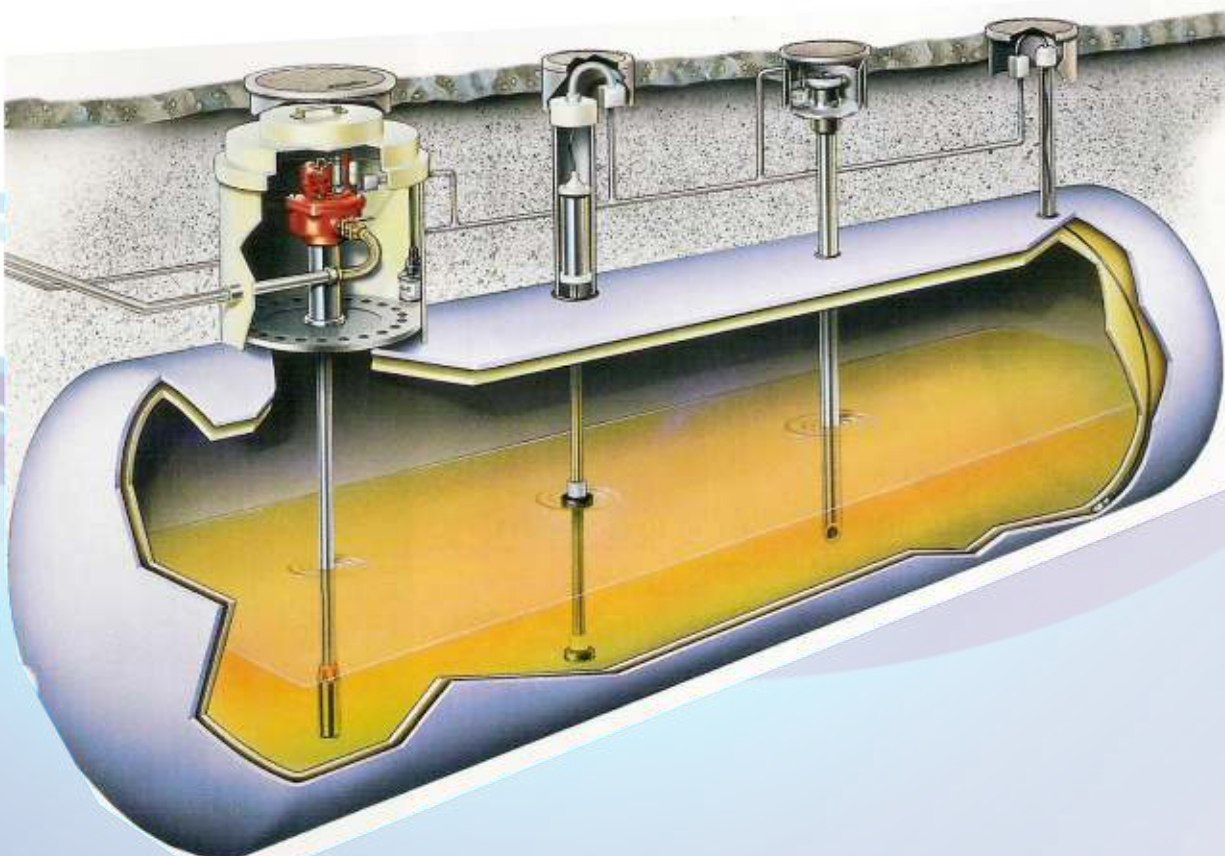
Red Jacket pumping systems are designed to go the distance delivering smooth operation, with less maintenance and a long life. Features include: One small assembly contains all functional elements: check valve, air eliminator, expansion relief valve, syphon nozzle and venturi, syphon check valve and pressure test screw. All models it standard 4" NPT tank openings. Bayonet-type electrical connector provides a safe explosion-proof electric disconnect without separating wires. Pressure relief valve and check valve can be isolated to assist in pressure-testing the lines. On-winding thermal over-current protector prevents premature motor failure.



FE PETRO™

Submersible Pumping Systems - USA

FE Petro™ brand submersible pumping systems set the standard for performance, efficiency and safety by which all other systems are measured. With a history of excellence, FE Petro™ maintains a unique set of system features that sets it apart as the industry's fuel pumping leader.



Heavy Duty Large Frame Reels (Nordic Series 3700 & 5900),

2", 3" or 4" fluid path for 1.5" through 4" I.D. hose

Rewind: Gear-drive crank rewind or chain and sprocket drive powered by A.C. or D.C. electric motor, compressed air motor or hydraulic motor. Inlet: 2" (Series 3700) / 3"(Series 5900) straight grooved fitting is standard. 4" (Series 5900) 90° grooved fitting and 24" diameter drum is standard. 90° grooved fitting swivel joint available at extra cost. Gooseneck: 2" (Series 3700) / 3" (Series 5900) / 4" (Series 5900) female NPT. Other sizes and/or threads can be furnished and must be specified.



Fuel Hose Reels (Series FE9000 / FD9000 / FF9000)

Reelcrafts spring retractable fuel delivery reels, equipped with Viton seals, incorporate metal forms to insure the greatest possible strength and are ideal for mobile and permanent-mount applications. These rugged, corrosion-resistant reels are suitable for a wide variety of fuel applications including E85. Series F/FD/FE reels are all supplied with our ball-bearing style swivel. Available in 1" & 1½" with and without hose.



Fuel Hose Reels (Series F80000 / FD80000)

Reelcrafts spring retractable fuel delivery reels, equipped with Viton seals, incorporate metal forms to insure the greatest possible strength and are ideal for mobile and permanent-mount applications. These rugged, corrosion-resistant reels are suitable for a wide variety of fuel applications including E85. Series F/FD/FE reels are all supplied with our ball-bearing style swivel. Available in ¾" & 1" with and without hose.



Spring Retractable Grounding Reels (Series G 3000)

Static discharge reels are used to ground equipment operating in hazardous atmospheres. When properly clamped to ground, the static discharge reel dissipates static electrical buildup, reducing the chances of sparking and the potential for explosion.



COX REELS SP Series

COX REELS SP Series "Single Product Delivery" spring driven hose reels are built to handle large hose diameters. Used in applications demanding large volume delivery in low and medium pressures such as fuel and water. The sturdy box-style frame has heavy duty steel cross supports to all four corners for extra strength and rigidity. Available in 1" & 1½" with and without hose.



Distributor and Stockist of all kinds of loading arms in aluminum, steel, stainless steel, as well as stairs and platforms. Stairs are the last step before completing a project of loading arms, a good ladder promotes a safe and accident-free charging.

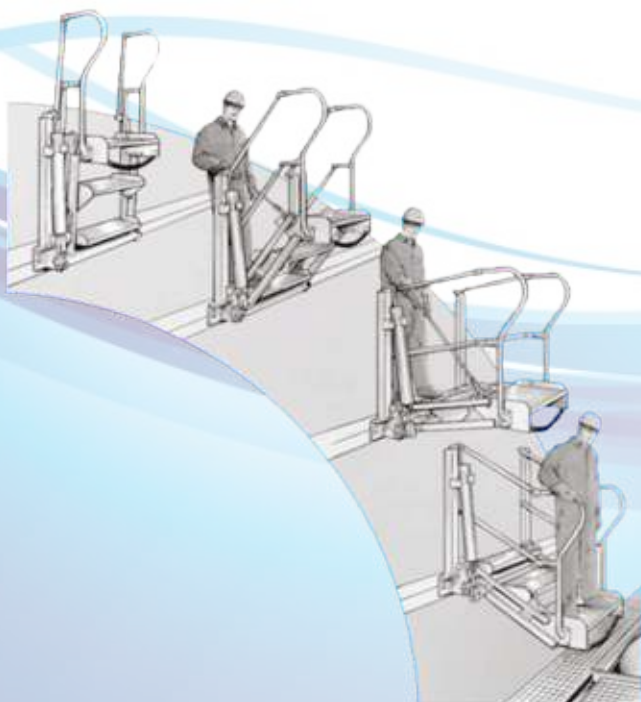


Loading Arm CA Type

DIMENSIONS	HAND	MATERIALS
		Aluminium
2, 3", 4", 6	Right/Left	Stainless steel
		Carbon steel

Loading Arm HA Type

DIMENSIONS	HAND	MATERIALS
		Aluminium
3", 4"	Right/Left	Stainless steel
		Carbon steel





Gassoflex Petroleum Composite Hose - SPAIN

Gassoflex Marine Heavy Duty is used in the loading/unloading of boats in marine applications which require a more robust hose. The product to be transferred will pre-determine the most adequate configuration of the inner lining and inner and outer wire spirals. Various possibilities exist.

EGE/ GGE/SSE/SST

Standard Series: 14100

Construction:

Inner Wire spiral: Galvanized Steel (G) or Stainless Steel

Outer Wire spiral: Galvanized Steel (G) or Stainless Steel

Inner Lining: Polypropylene (E) or P.T.F.E. (T)

Cover: PVC (PP on request)

Temperature range: -20°C a +100°C

Work Safety factor: The working pressure is based on a safety factor of 5:1. Available in 3/4" TO 12"



Specification Chart

Gasso Code	Working Pressure		Diameter (Inch)	Curve Radius (mm)	Weight Kg/m	Max. coil lengths (m)
	(bar)	(PSI)				
-	14	210	1	68	0,75	30
-	14	210	1 1/4	74	0,97	30
-	14	210	1 1/2	105	1,30	30
AIA1794	14	210	2	190	2,01	30
AIA1652	14	210	2 1/2	225	2,90	30
AIA1801	14	210	3	290	3,40	30
AIA205	14	210	4	320	5,95	30



Petroleum Rubber Hose - CANADA

Novaflex 3260 Tank Truck Hose

A very flexible economical, lightweight designed for transfer of petroleum products. Excellent for use in oil field applications.

Specifications

TTube: Nitrile.

Reinforcement: Multiple plies polyester tire cord and steel wire helix

Cover: Smooth black oil resistant cover

Length: 100 ft.

Temperature Range: -30°F to +180°F

Available in 3/4" TO 4"



Specification Chart

Part No.	I.D.	O.D.	Plies	MBR (in)	VAC (Hg)	WP psi	WT LBS/FT
3260BT00000-00	1	1.52	2	4	30	150	0.62
3260BT01250-00	1 1/4	1.76	2	4	30	150	0.71
3260BT01500-00	1 1/2	2.00	2	5	30	150	0.79
3260BT02000-00	2	2.44	2	6	30	150	1.00
3260BT02500-00	2 1/2	3.02	2	8	30	150	1.33
3260BT03000-00	3	3.52	2	9	30	150	1.85
3260BT04000-00	4	4.57	2	12	30	150	2.40
3260BT04600-00	6	6.76	2	30	30	150	5.31



Fuel Nozzles - USA

M. Carder Automatic Shut Off Nozzle

The Big Mouth is a lightweight automatic Diesel nozzle that meets the fueling needs of many truck stops and other operations at an Economical price. Equipped with the traditional rear hold open clip and hose swivels. Available in ¾", 1" and 1½"



5-Star

This New lightweight automatic gasoline nozzle is ideal for full / self-service. "One hand" hold open clip with patented "Kicker" feature provides positive clip release with automatic shut off. Micro-Touch valve offers precise - to the penny flow control. N7U - Unleaded ¾" inlet UL Listed
N7L - Leaded ¾" inlet UL Listed



Big Mouth

The lightweight Big Mouth automatic diesel nozzle provides efficient refueling and durability at an economical price. Classic rear hold-open clip.
N3 - 1" inlet UL Listed



Fueler 100

A Heavy Duty High-Flow automatic nozzle with 1½" inlet. It is through, reliable and easy to operate. High strength aluminum casting for greater durability.
N63 - 1½" inlet UL Listed

Twin Crown carries a complete line of Cim-Tek & Petro clear Filters for above ground fuel tanks and other bulk fuel systems. Fuel filters we carry for the filtration of gasoline, diesel, fuel oil, bio fuel, AV gas and more. Call us to learn what fuel filter you need for your fuel tank. Chances are we have it for quick delivery.



Benefits & Design Features

- Up to 40 gpm (151 lpm) maximum flow
- 50 psi (3.4 bar) maximum working pressure
- Various Micron media(s) available

Camlock Fittings

Available in Aluminium, Bronze, Stainless

Part "A"
Female Pipe
Male Camlock



Part "B"
Male Pipe
Female Camlock



Part "C"
Hose Shank
Female Camlock



Part "D"
Female Pipe
Female Camlock



Part "E"
Hose Shank
Male Camlock



Part "F"
Male Pipe
Male Camlock



Part "DC"
Camlock Cap



Part "DP"
Camlock Plug



Part "AA"
Male Camlock
Male Camlock



Part "DA"
Female Camlock
Male Camlock



Part "DD"
Female Camlock
Female Camlock



Part "DC-L"
Camlock
Locking Cap



It is a family run company, with more than 20 years experience in the tank truck business. We have a proven successful record in the tank truck equipment manufacturing field working with and supplying for big companies in many countries.

In 2012 EQUIPTANK joined GASSO Group and became a sister company.

Equiptank Engineering, SL. company specialized on the development of new solutions for transporting dangerous products in mobile tankers.

We include the most complete range of equipment and accessories for petroleum, dry bulk and chemical tank trucks:

* Solutions for hydrocarbons and by-products:

-Overfill prevention systems, manhole covers, safety valves, vapor recovery equipments, pneumatic manifold, ball valves, flanges, reductions, products indicator, hoses and much more..

- Fuel cargo control monitoring: provides all the information of the load and the vehicles in real time.

*Solutions for chemical and powdery products. Dry Bulk manild, pneumatic dry bulk valves, relief valves, mechanical bottom valves.



Betts™ Tanker Equipments - USA

Industries Inc.

Betts' commitment to always do what's best has positioned it as an industry-leading manufacturer of critical components and lighting systems for the tank truck industry, worldwide. Betts has led the way with innovation and expertise in designing and producing a range of valves, manlids, pressure/vacuum relief valves, accessories and lighting systems for multiple liquid tank, dry bulk, and industrial applications. Founded in 1901, Our 100+ year history, steeped in family ownership and community values, has built a legacy and reputation for fair, honest business practices and genuine customer relationships. It's our mission to strive each day to "Do What's Best"—to live up to this legacy of unsurpassed customer service, industry leadership and innovative products that stand the test of time.



EMCO WHEATON Tanker Equipments - UK

A Gardner Denver Product

Emco Wheaton Equipments are tailored to fit into many operations, vehicles and bulk plant requirements. All components are designed to operate reliably in hazardous conditions, ensuring that your product is delivered without spillage or contamination, at all times protecting the driver and the environment. Our equipment complies with many industry standard and recommended practices, including, ISO 9000/2000 approval, ensuring our methods and manufacturing procedures are monitored consistently, resulting in quality approved equipment time after time





MOD. WDE-K & MOD: GMD

Horizontal Woltmann with removable insert. Dry dial with magnetic transmission, sealed mechanism with direct reading on numbered rolls. 360° adjustable ring. Used in industry and irrigation. Pre-equipped for impulse emitter device (applicable even after installation). First quality materials resistant to corrosion. Available Size - 1/2" to 20" with a low range of 3 M3H to 3000 M3H .



MOD. WDE-K 90° C & MOD: GMD

Horizontal Woltmann with removable insert. Dry dial with magnetic transmission, sealed mechanism with direct reading on numbered rolls. 360° adjustable ring. Used in industry. Pre-equipped for impulse emitter device (applicable even after installation). First quality materials resistant to corrosion. Available Size - 1/2" to 20" with a low range of 3 M3H to 3000 M3H



MOD. MAG-C

The electromagnetic flow meter MAG-C has been designed to measure flows and volumes of electrically conductive liquids. The innovative managing of the signal generated by the electrodes, allows extremely accurate measurements in an extremely vast field of flows, including reverse flows. The usage of 3 internal electrodes allows for error margins of less than 2% at flow speed between 0.2 m/s and 10 m/s. It is also possible to obtain an alarm when the pipe is not completely full. All those features combined with a very low pressure drop and the possibility to install it in a variety of different positions do make its use suitable for many food and chemical industry sectors as well as waterworks.



Explosion Proof Electric Motors

The installation of electric motors where flammable products are continuously handled, processed or storage, must comply with the most demanded safety standards in order to guarantee protection of life, machines and environment. Following to the highest safety standards explosion proof motors integrate the high performance of the brakes. Perfect solution to equipments where fast safety stops are required, as well as precise positioning with safety in hazardous areas such Zone 1 and Zone 2. Exd motors with brake are available in versions: Standard Efficiency (EFF2), Premium Efficiency (EFF1) and Top Premium Efficiency (Exceeds EFF1) and are certified to operate with frequency inverters.

Standard Features

Single-phase, Three-phase, multivoltage, IP55, TEFC

Output: 0.37 up to 500 kW

Speed: 900 RPM, 1450/1750 RPM, 2900/3600 RPM

HZ: 50/60

Frames: 90S up to 355M/L

Voltage: 220-240/380-415V (up to 100L) / 380-415/660V (from 112M and up)

Class "F" insulation (DT=80K)

Continuous duty: S1

Service Factor: 1.00

Design N

Ambient temperature: 40 °C, at 1000 m.a.s.l

Squirrel cage rotor/Aluminium die cast



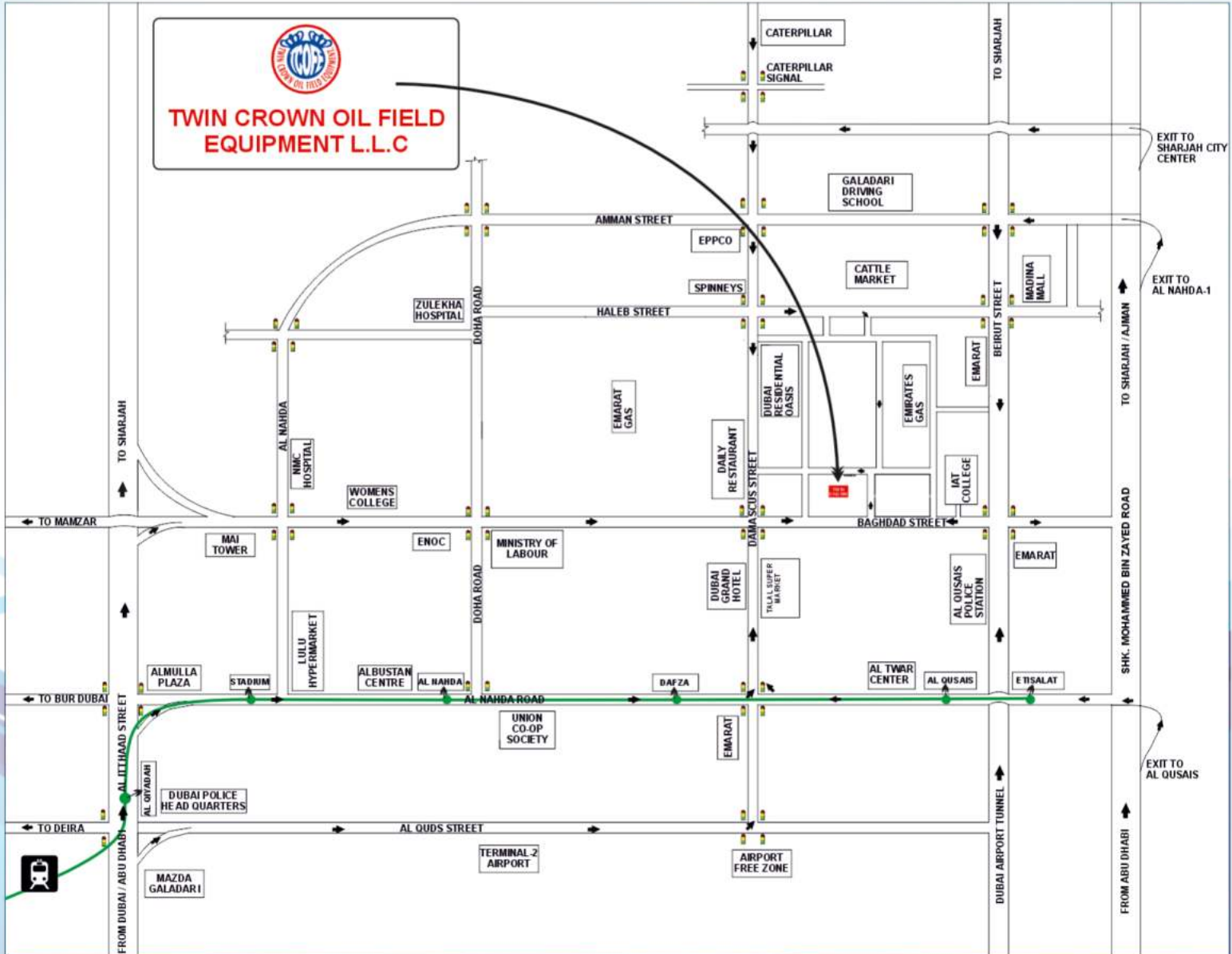
TWIN CROWN

OIL FIELD EQUIPMENT L.L.C



توين كراون

لمعدات حقول النفط ش.ذ.م.م.



Tel.: +971 4 258 4211, Mob.: +971 52 888 8584 / +971 50 457 9978

P.O. Box : 48500, Dubai - United Arab Emirates

E-mail : sales@twincrown.com



www.twincrown.com